

LKR-SPOG 125K-FI

Pressed steel swivel caster, heavy duty design, with bolt hole, with brake system 'stop-fix', nylon heavy duty wheel

ID 974848

Customs tariff number 87169090



rig: LKR series

- strong pressed steel, zinc-plated, blue-passivated, Cr6-free
- double ball bearing in the swivel head
- strong central kingpin
- minimum swivel head play and smooth rolling characteristic and increased service life due to the special dynamic Blickle riveting process

Wheel: SPOG series

- high-quality nylon 6, impact resistant, hardness 70 Shore D, extremely robust heavy-duty version, color gray

Other features:

- high chemical resistance to many aggressive substances
- operating temperature: -20 °C to +80 °C, reduced load capacity over +35 °C

Technical data:

Wheel Ø (D)	☉	125 mm
Wheel width	⊥	40 mm
Load capacity at 4 km/h	⬆	350 kg
Load capacity (static)	⬆	875 kg
Bearing type	☉	ball bearing
Total height (H)	⌀	155 mm
Plate Ø	⌀	88 mm
Bolt hole	🔩	13 mm
Offset (F)	⌀	42 mm
Temperature resistance min		-20 °C
Temperature resistance max		80 °C
Tread and tire hardness		70 Shore D
Unit weight	⚖	1.6 kg
Non-marking		✓
Non-staining		✓
Antistatic	⚡	✗
Electrically conductive	⚡	✗
Corrosion-resistant		✗
Heat-resistant	🔥	✗
Tread hydrolysis-resistant		✗
Suitable for autoclaves		✗
Suitable for machine washing		✗



Tread and tire hardness

■■■■■ 70 Shore D

Rolling resistance

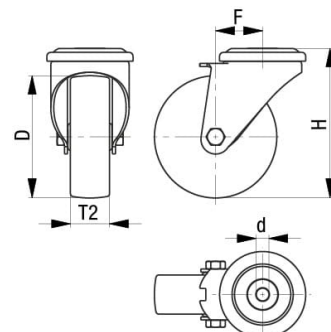
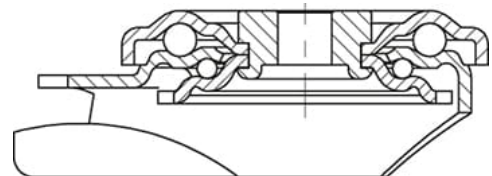
■■■■■ excellent

Wear resistance

■■■■■ good

Operating noise / floor surface preservation

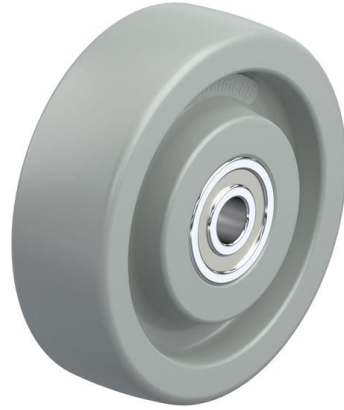
■■■■■ satisfactory



Product references



Corresponding swivel caster LKR-SPOG 125K



Wheel used SPOG 125/15K