

## LKD-PATH 125K-FI-ZA55

**Blickle synthetic twin caster MOVE, color gray white, with stem fitting, with brake system 'stop-fix', wheel with thermoplastic polyurethane tread, with nylon wheel center**

**EAN** 4047526216269

**ID** 872849

**Customs tariff number** 87169090



### rig: LKD series

- high-quality nylon 6, impact resistant
- two grooved ball bearings in the swivel head sealed on both sides
- zinc-plated, blue-passivated steel plug-in stem (Cr6-free), bolted and secured
- color gray white RAL 9002
- modern, appealing design

### Wheel: PATH series

- tread: high-quality thermoplastic polyurethane (TPU), hardness 94 Shore A, color dark gray, non-marking, non-staining
- wheel center: high-quality nylon 6, impact resistant, color gray white RAL 9002

### Other features:

- very high chemical resistance to many aggressive substances
- operating temperature: -5 °F to +140 °F, temporarily up to +175 °F, reduced load capacity over +85 °F
- Swivel caster with "stop-fix" brake with easy release kick lever as standard

### Technical data:

Wheel Ø (D)	☉	125 mm
Wheel width	⊥	20 mm
Number of wheels		2
Total castor width	⌀	80 mm
Load capacity at 3 km/h	⊞	125 kg
Load capacity (static)	⊞	315 kg
Bearing type	☉	ball bearing
Total height (H)	⊥	130 mm
Stem Ø	⊥	22 mm
Stem length	⊥	45 mm
Cross hole Ø	⊥	M8
Cross hole position	⊥	20 mm
Offset (F)	⌀	40 mm
Temperature resistance min		-20 °C
Temperature resistance max		60 °C
Tread and tire hardness		94 Shore A
Unit weight	⊞	0.9 kg
Non-marking		✓
Non-staining		✓
Antistatic	⊞	×
Electrically conductive	⊞	×
Corrosion-resistant		×



### Tread and tire hardness

■ ■ ■ ■ ■ 94 Shore A

### Rolling resistance

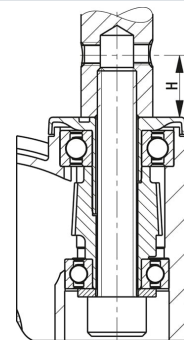
■ ■ ■ ■ ■ very good

### Wear resistance

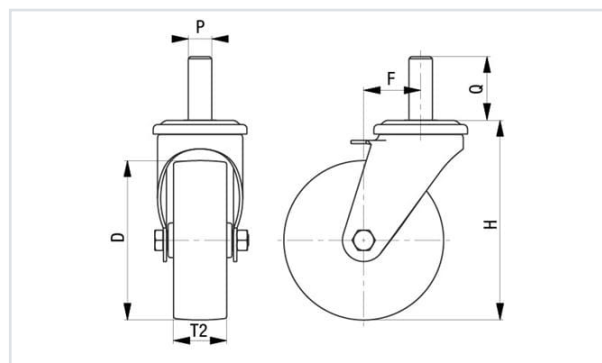
■ ■ ■ ■ ■ good

### Operating noise / floor surface preservation

■ ■ ■ ■ ■ good



Heat-resistant	☒	×
Tread hydrolysis-resistant		×
Suitable for autoclaves		×
Suitable for machine washing		×



## Product references

