

FPTH 80x25/25-12K

Guide roller with thermoplastic polyurethane tread, with nylon wheel center

EAN 4047526119898
ID 761508
Customs tariff number 83022000



Tread:

- high-quality thermoplastic polyurethane (TPU), hardness 92 Shore A
- low rolling resistance
- high abrasion resistance
- **hydrolysis resistant**
- color dark gray, non-marking, non-staining
- chemically-bonded inseparable connection with the wheel center

Wheel center:

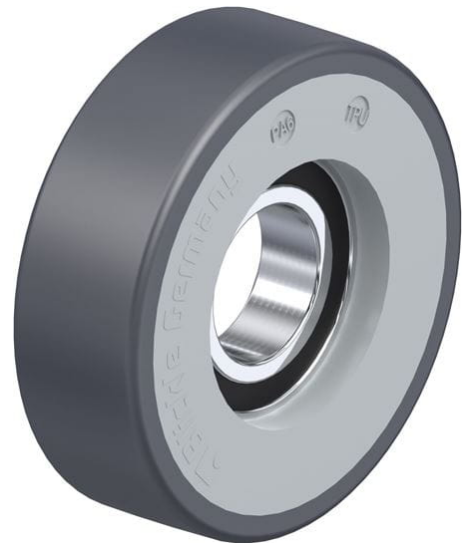
- high-quality nylon 6, impact resistant
- color silver gray

Other features:

- very high chemical resistance to many aggressive substances
- operating temperature: -5 °F to +160 °F, temporarily up to +195 °F, reduced load capacity over +95 °F
- load capacity specifications refer to obstacle-free applications

Technical data:

Wheel Ø (D)	☉	80 mm
Wheel width	⏏	25 mm
Load capacity at 4 km/h	⚖	180 kg
Load capacity (static)	⚖	450 kg
Bearing type	☉	ball bearing
Ball bearing		6005 2RS
Axle bore Ø (d)		25 mm
Clamping length (T5)	🔧	12 mm
Temperature resistance min		-20 °C
Temperature resistance max		70 °C
Tread and tire hardness		92 Shore A
Unit weight	⚖	0.2 kg
Non-marking		✓
Non-staining		✓
Antistatic	⚡	✗
ProductDetail.TechnicalData.Esd		✗
Electrically conductive	⚡	✗
Corrosion-resistant		✗
Heat-resistant	🔥	✗
Tread hydrolysis-resistant		✓
Suitable for autoclaves		✗



Tread and tire hardness

■ ■ ■ ■ ■ □ 92 Shore A

Rolling resistance

■ ■ ■ ■ ■ □ very good

Wear resistance

■ ■ ■ ■ ■ □ very good

Operating noise / floor surface preservation

■ ■ ■ ■ □ □ good

