

BS-GSP0 125K

Heavy duty welded steel fixed caster, heavy duty wheel made of compressed cast nylon

EAN 4047526048686

ID 48686

Customs tariff number 87169090



rig: BS series

- particularly robust welded steel construction
- zinc-plated, yellow-passivated, Cr6-free

Wheel: GSP0 series

- high-quality cast nylon, reaction-injected, impact resistant, hardness 80 Shore D, color natural beige

Other features:

- high chemical resistance to many aggressive substances
- reduced moisture absorption
- operating temperature: -20 °C to +80 °C, reduced load capacity over +35 °C
- consider the surface pressure on sensitive floors due to high point loads

Technical data:

Wheel Ø (D)	🌀	125 mm
Wheel width	⏏	55 mm
Load capacity at 4 km/h	⚖	1,750 kg
Load capacity (static)	⚖	4,375 kg
Bearing type	⦿	ball bearing
Total height (H)	📏	170 mm
Plate size	📏	140 x 110 mm
Bolt hole spacing	📏	105 x 75–80 mm
Bolt hole Ø	📏	11 mm
Temperature resistance min		-20 °C
Temperature resistance max		80 °C
Tread and tire hardness		80 Shore D
Unit weight	⚖	2.9 kg
Non-marking	✓	
Non-staining	✓	
Antistatic	⚡	✗
Electrically conductive	⚡	✗
Corrosion-resistant		✗
Heat-resistant	🔥	✗
Tread hydrolysis-resistant		✗
Suitable for autoclaves		✗
Suitable for machine washing		✗



Tread and tire hardness

■ ■ ■ ■ ■ 80 Shore D

Rolling resistance

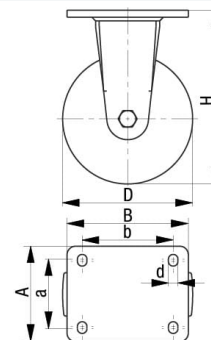
■ ■ ■ ■ ■ excellent

Wear resistance

■ ■ ■ ■ □ very good

Operating noise / floor surface preservation

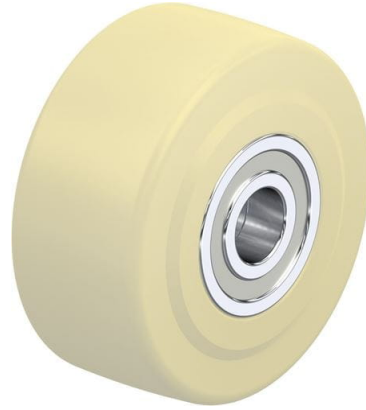
■ ■ □ □ □ satisfactory



Product references



Corresponding swivel caster LS-GSP0 125K



Wheel used GSP0 125/25K