

HTH 82x100/20-100K

Rollers for pallet trucks, with Blickle Extrathane® polyurethane tread, with steel wheel center

EAN 4047526269739
ID 269738
Customs tariff number 87169090



Tread:

- high-quality polyurethane elastomer Blickle Extrathane®, hardness 92 Shore A
- low rolling resistance
- high abrasion resistance
- high cut and tear propagation resistance
- color light brown, non-marking, non-staining
- excellent chemical connection with the wheel center

Wheel center:

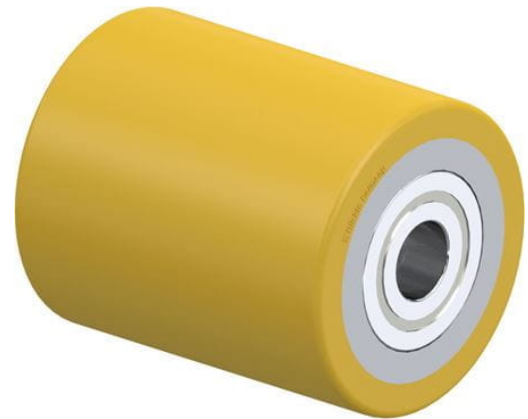
- metal

Other features:

- high chemical resistance to many aggressive substances
- operating temperature: -5 °F to +160 °F, temporarily up to +195 °F, reduced load capacity over +105 °F

Technical data:

Wheel Ø (D)	⌀	82 mm
Wheel width	⏏	100 mm
Load capacity at 4 km/h	⚖	920 kg
Load capacity (static)	⚖	2,300 kg
Bearing type	⦿	ball bearing
Ball bearing		6204 ZZ
Axle bore Ø (d)		20 mm
Clamping length (T5)	⏏	100 mm
Temperature resistance min		-20 °C
Temperature resistance max		70 °C
Tread and tire hardness		92 Shore A
Unit weight	⚖	1.5 kg
Non-marking		✓
Non-staining		✓
Antistatic	⚡	×
ProductDetail.TechnicalData.Esd		×
Electrically conductive	⚡	×
Corrosion-resistant		×
Heat-resistant	🔥	×
Tread hydrolysis-resistant		×
Suitable for autoclaves		×



Tread and tire hardness

■ ■ ■ ■ ■ □ 92 Shore A

Rolling resistance

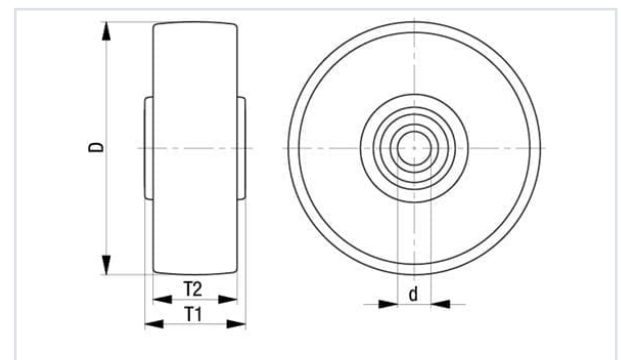
■ ■ ■ ■ ■ □ very good

Wear resistance

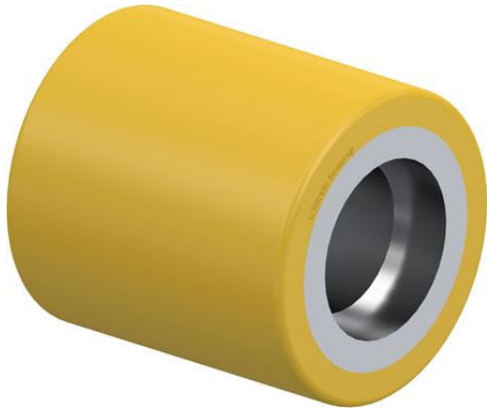
■ ■ ■ ■ ■ □ excellent

Operating noise / floor surface preservation

■ ■ ■ ■ □ □ good



ProductDatasheet.ProductReferences



**Corresponding caster (No ball bearing) RK-HTH
082x100/47x14-100-Z**