

BSD-GTH 250K

Heavy duty welded steel twin wheel fixed caster, heavy duty wheel, with Blickle Extrathane® polyurethane tread, with cast iron wheel center

EAN 4047526269579

ID 269571

Customs tariff number 87169090



rig: BSD series

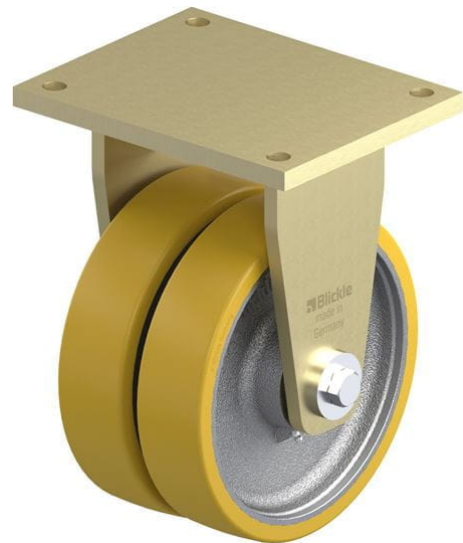
- particularly robust welded steel construction, zinc-plated, yellow-passivated, Cr6-free or lacquered, red

Wheel: GTH series

- tread: high-quality polyurethane elastomer Blickle Extrathane®, hardness 92 Shore A, color light brown, non-marking, non-staining
- wheel center: rugged gray cast iron
- with grease nipple, lacquered, color silver

Other features:

- high chemical resistance to many aggressive substances
- operating temperature: -5 °F to +160 °F, temporarily up to +195 °F, reduced load capacity over +105 °F
- Fixed casters: long side of plate parallel to the wheel axle



Technical data:

Wheel Ø (D)	☉	250 mm
Wheel width	⊥	60 mm
Number of wheels		2
Load capacity at 4 km/h	⚖	2,700 kg
Load capacity (static)	⚖	6,750 kg
Bearing type	☉	ball bearing
Total height (H)	⊕	330 mm
Plate size	⊞	255 x 200 mm
Bolt hole spacing	⊞	210 x 160 mm
Bolt hole Ø	⌀	18 mm
Temperature resistance min		-20 °C
Temperature resistance max		70 °C
Tread and tire hardness		92 Shore A
Unit weight	⚖	26.2 kg
Non-marking		✓
Non-staining		✓
Antistatic	⚡	✗
Electrically conductive	⚡	✗
Corrosion-resistant		✗
Heat-resistant	🔥	✗
Tread hydrolysis-resistant		✗
Suitable for autoclaves		✗
Suitable for machine washing		✗

Tread and tire hardness

■■■■■□ 92 Shore A

Rolling resistance

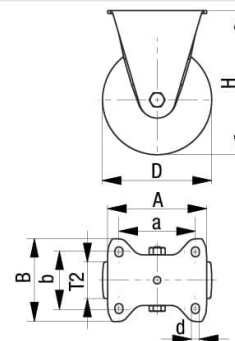
■■■■■□ very good

Wear resistance

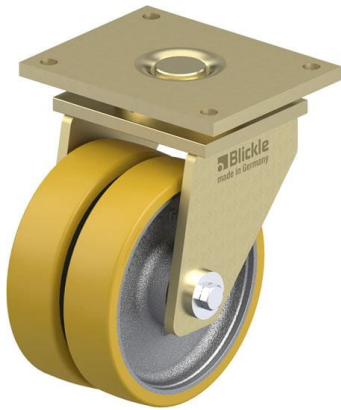
■■■■■□ excellent

Operating noise / floor surface preservation

■■■■■□ good



Product references



Corresponding swivel caster LSD-GTH 250K



Wheel used GTH 250/35K