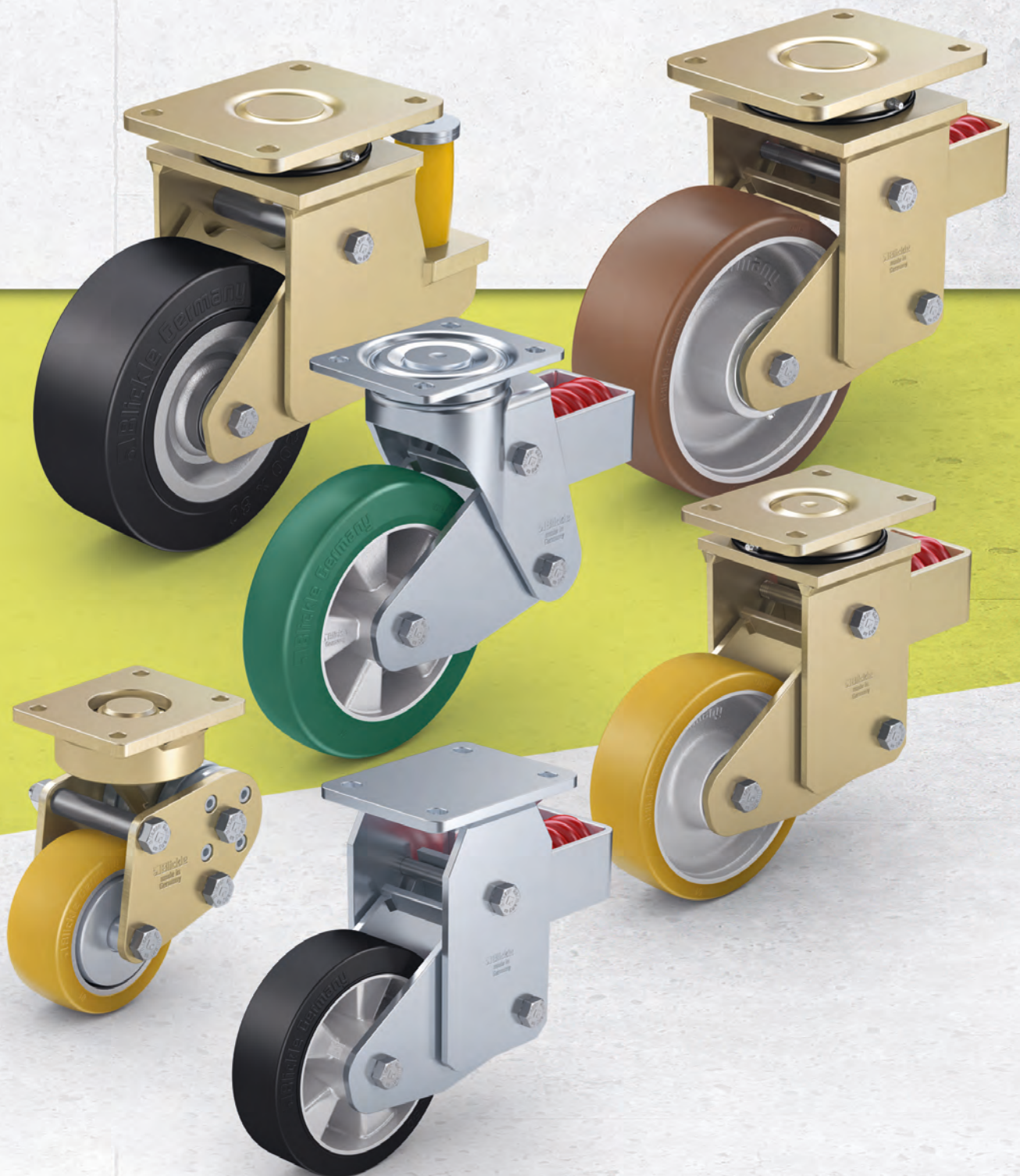
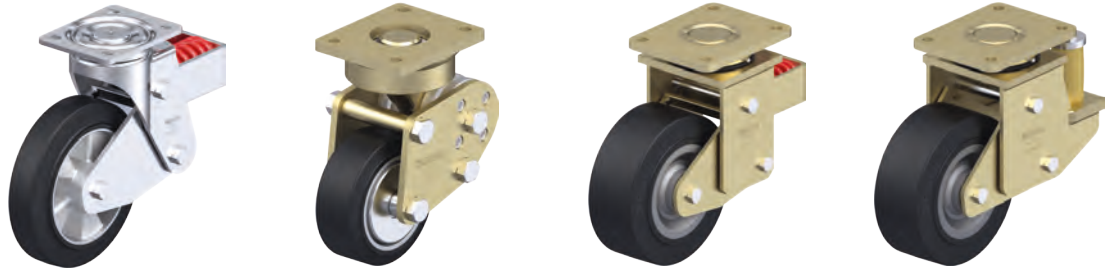


## Spring-loaded castors



## Selection tool

### Spring-loaded castors



Series	LHF	LPFE	LSFN	LSFE
<b>Bracket description</b>	strong pressed steel	solid welded steel construction	robust welded steel construction	robust welded steel construction
<b>Suspension</b>	steel spring	polyurethane torsion spring	steel spring	polyurethane spring element
<b>Wheel Ø</b>	100–200 mm	100–150 mm	160–300 mm	160–250 mm
<b>Castor load capacity up to</b>	800 kg	500 kg	2,400 kg	1,800 kg
<b>Initial tension</b>	30–50 kg	40 kg	50–150 kg	50–200 kg
<b>Spring tension</b>	200–570 kg	330–500 kg	400–1,500 kg	300–1,200 kg
<b>Max. spring travel</b>	19–25 mm	16–25 mm	25–45 mm	25 mm
<b>Speeds up to 16 km/h</b>	■ ■ ■ ■ ■ □	■ ■ ■ ■ ■ ■	■ ■ ■ ■ ■ ■	■ ■ ■ ■ ■ ■
<b>Damping characteristics</b>	■ ■ ■ ■ □ □	■ ■ ■ ■ ■ ■	■ ■ ■ ■ □ □	■ ■ ■ ■ ■ ■
<b>Used on challenging surfaces</b>	■ ■ ■ ■ ■ □	■ ■ ■ ■ □ □	■ ■ ■ ■ ■ ■	■ ■ ■ ■ ■ ■
<b>Available wheel series</b>	ALEV, ALST, ALTH	ALEV, ALTH	SE, GST, GTH, GB	SE, GST, GTH, GB
<b>For a description of the wheel, refer to</b>	page 221, 294, 274	page 221, 274	page 228, 301, 286–287, 312–313	page 228, 301, 286–287, 312–313
<b>For information about swivel and fixed castors, refer to</b>	page 476, 480, 483	page 477, 484	page 478, 481, 485, 487	page 479, 482, 486, 488

■ ■ ■ ■ ■ excellent   
 ■ ■ ■ ■ ■ very good   
 ■ ■ ■ ■ good   
 ■ ■ satisfactory   
 ■ sufficient

## LHF-ALEV, BHF-ALEV series

**Pressed steel castors, heavy-duty design, with steel spring, wheel with "Blickle EasyRoll" elastic solid rubber tyre**

200–500 kg

**Bracket:** LHF/BHF series

- strong pressed steel, zinc-plated, blue-passivated, Cr6-free
- heavy fork and top plate
- robust spring structure with steel spring
- maintenance-free spring mechanism

**Swivel bracket:**

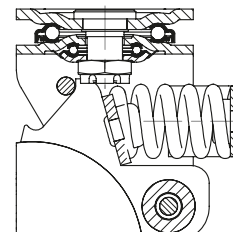
- double ball bearing in the swivel head
- bolted and secured central kingpin, extremely strong
- particularly resistant to shocks and impact due to **four specially-shaped, hardened bearing seats**

**Wheel:** ALEV series

- tyre: high-quality elastic solid rubber "Blickle EasyRoll" in smooth rolling quality, hardness 65 Shore A, colour black
- wheel centre: die-cast aluminium

**Additional details:**

- bracket series: page 94
- wheel series: page 63
- bearing types: page 84–85



Swivel castors	Fixed castors	Wheel Ø [mm]	Wheel width [mm]	Load capacity [kg]	Spring tension [kg]	Initial tension [kg]	Spring travel [mm]	Total height [mm]	Plate size [mm]	Bolt hole spacing [mm]	Bolt hole Ø [mm]	Offset swivel castor [mm]
LHF-ALEV 100K-1	BHF-ALEV 100K-1	100	40	200	200	30	19	175	100 x 85	80 x 60	9	32
LHF-ALEV 100K-3	BHF-ALEV 100K-3	100	40	200	200	30	19	175	140 x 110	105 x 75–80	11	32
LHF-ALEV 125K-1	BHF-ALEV 125K-1	125	40	250	240	30	21	200	100 x 85	80 x 60	9	45
LHF-ALEV 125K-3	BHF-ALEV 125K-3	125	40	250	240	30	21	200	140 x 110	105 x 75–80	11	45
LHF-ALEV 160K	BHF-ALEV 160K	160	50	400	400	50	25	245	140 x 110	105 x 75–80	11	65
LHF-ALEV 200K	BHF-ALEV 200K	200	50	500	400	50	25	265	140 x 110	105 x 75–80	11	65

11

### Versions / options



	with non-marking grey tyre	electrically conductive version, black tyre	with "Radstop" wheel brake
Technical description page	52	50	113
<b>Product code suffix</b>	<b>-SG</b>	<b>-EL</b>	<b>-RA</b>
Available for	all	upon request	upon request



## LPFE-ALEV, BPFE-ALEV series

**Heavy-duty castors with polyurethane torsion springs, wheel with "Blickle EasyRoll" elastic solid rubber tyre**

200–400 kg

**Bracket:** LPFE/BPFE series

- solid welded steel construction, solid forged part, zinc-plated, yellow-passivated, Cr6-free
- patented woodruff key design for outstanding spring-damping properties

**Swivel bracket:**

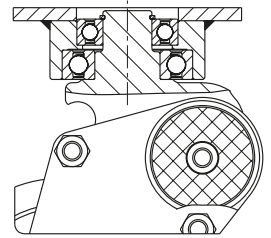
- one sealed lifetime lubricated grooved ball bearing in the swivel head (two for wheel Ø 125x50 mm or more)

**Wheel:** ALEV series

- tyre: high-quality elastic solid rubber "Blickle EasyRoll" in smooth rolling quality, hardness 65 Shore A, colour black
- wheel centre: die-cast aluminium

**Additional details:**

- bracket series: page 95
- wheel series: page 63
- bearing types: page 84–85



Swivel castors	Fixed castors	Wheel Ø [mm]	Wheel width [mm]	Load capacity [kg]	Spring tension [kg]	Initial tension [kg]	Spring travel [mm]	Total height [mm]	Plate size [mm]	Bolt hole spacing [mm]	Bolt hole Ø [mm]	Offset swivel castor [mm]
LPFE-ALEV 100K-FA	BPFE-ALEV 100K-FA	100	40	200	330	40	16	170	100 x 85	80 x 60	9	38
LPFE-ALEV 125K-FA	BPFE-ALEV 125K-FA	125	40	250	290	40	18	192	100 x 85	80 x 60	9	45
LPFE-ALEV 127K	BPFE-ALEV 127K	125	50	300	370	40	25	225	140 x 110	105 x 75–80	11	61
LPFE-ALEV 150K	BPFE-ALEV 150K	150	50	400	370	40	25	255	140 x 110	105 x 75–80	11	61

### Versions / options



	with non-marking grey tyre	electrically conductive version, black tyre	with stem
Technical description page	52	50	104
<b>Product code suffix</b>	<b>-SG</b>	<b>-EL</b>	<b>-ZA</b>
Available for	all	upon request	upon request

## LSFN-SE, BSFN-SE series

### Welded steel heavy-duty castors with steel spring, wheel with "Blickle EasyRoll" elastic solid rubber tyres

450–1,000 kg

**Bracket:** LSFN/BSFN series

- particularly robust welded steel construction, zinc-plated, yellow-passivated, Cr6-free
- robust spring structure with steel spring
- maintenance-free spring mechanism

**Swivel bracket:**

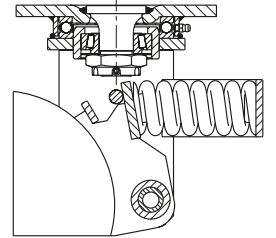
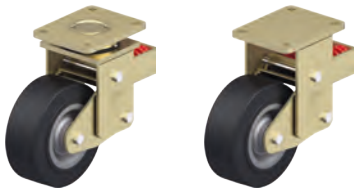
- axial grooved ball bearing ISO 104 and tapered roller bearing ISO 355 in the swivel head
- bolted and secured welded central kingpin, extremely strong
- dust and splash-proof
- grease nipple

**Wheel:** SE series

- tyre: high-quality elastic solid rubber "Blickle EasyRoll" in smooth rolling quality, hardness 65 Shore A, colour black
- wheel centre: thick-walled pressed steel, lacquered, colour anthracite

**Additional details:**

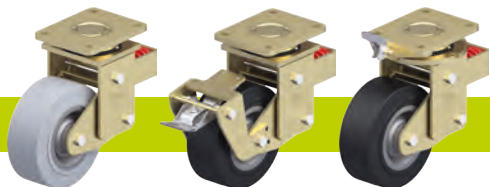
- bracket series: page 95
- wheel series: page 63
- bearing types: page 84–85



Swivel castors	Fixed castors	Wheel Ø [mm]	Wheel width [mm]	Load capacity [kg]	Spring tension [kg]	Initial tension [kg]	Spring travel [mm]	Total height [mm]	Plate size [mm]	Bolt hole spacing [mm]	Bolt hole Ø [mm]	Offset swivel castor [mm]
LSFN-SE 160K	BSFN-SE 160K	160	50	450	400	50	25	245	140 x 110	105 x 75–80	11	100
LSFN-SE 200K	BSFN-SE 200K	200	50	600	400	50	25	265	140 x 110	105 x 75–80	11	100
LSFN-SE 202K	BSFN-SE 202K	200	80	850	570	75	25	275	175 x 140	140 x 105	14	100
LSFN-SE 250K	BSFN-SE 250K	250	60	850	570	75	25	315	175 x 140	140 x 105	14	120
LSFN-SE 252K	BSFN-SE 252K	250	80	1,000	750	100	25	315	175 x 140	140 x 105	14	120
LSFN-SE 300K	BSFN-SE 300K	300	75	1,000	850	100	45	395	200 x 160	160 x 120	14	120

11

#### Versions / options



	with non-marking grey tyre	with "Radstop" wheel brake	with directional lock
Technical description page	52	113	115
<b>Product code suffix</b>	<b>-SG</b>	<b>-RA</b>	
Available for	wheel Ø 160–200 mm, others upon request	upon request	upon request

## LSFE-SE, BSFE-SE series

### Welded steel heavy-duty castors with polyurethane spring, wheel with "Blickle EasyRoll" elastic solid rubber tyres

450–1,000 kg

**Bracket:** LSFE/BSFE series

- particularly robust welded steel construction, zinc-plated, yellow-passivated, Cr6-free
- elastomer spring for excellent damping properties
- maintenance-free spring mechanism

**Swivel bracket:**

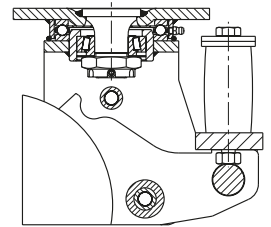
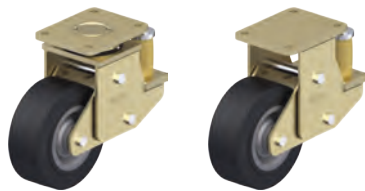
- axial grooved ball bearing ISO 104 and tapered roller bearing ISO 355 in the swivel head
- bolted and secured welded central kingpin, extremely strong
- dust and splash-proof
- grease nipple

**Wheel:** SE series

- tyre: high-quality elastic solid rubber "Blickle EasyRoll" in smooth rolling quality, hardness 65 Shore A, colour black
- wheel centre: thick-walled pressed steel, lacquered, colour anthracite

**Additional details:**

- bracket series: page 95
- wheel series: page 63
- bearing types: page 84–85



Swivel castors	Fixed castors	Wheel Ø [mm]	Wheel width [mm]	Load capacity [kg]	Spring tension [kg]	Initial tension [kg]	Spring travel [mm]	Total height [mm]	Plate size [mm]	Bolt hole spacing [mm]	Bolt hole Ø [mm]	Offset swivel castor [mm]
LSFE-SE 160K	BSFE-SE 160K	160	50	450	300	50	25	245	140 x 110	105 x 75–80	11	100
LSFE-SE 200K	BSFE-SE 200K	200	50	600	500	50	25	265	140 x 110	105 x 75–80	11	100
LSFE-SE 202K	BSFE-SE 202K	200	80	850	700	100	25	275	175 x 140	140 x 105	14	100
LSFE-SE 250K	BSFE-SE 250K	250	60	850	700	100	25	315	175 x 140	140 x 105	14	120
LSFE-SE 252K	BSFE-SE 252K	250	80	1,000	700	100	25	315	175 x 140	140 x 105	14	120

#### Versions / options



	with non-marking grey tyre	with "Radstop" wheel brake	with directional lock	different spring tension
Technical description page	52	113	115	
<b>Product code suffix</b>	<b>-SG</b>	<b>-RA</b>		
Available for	wheel Ø 160–200 mm, others upon request	upon request	upon request	upon request

## LHF-ALST, BHF-ALST series

**Pressed steel castors, heavy-duty design, with steel spring, wheel with Blickle Softhane® polyurethane tread**

320–750 kg

**Bracket:** LHF/BHF series

- strong pressed steel, zinc-plated, blue-passivated, Cr6-free
- heavy fork and top plate
- robust spring structure with steel spring
- maintenance-free spring mechanism

**Swivel bracket:**

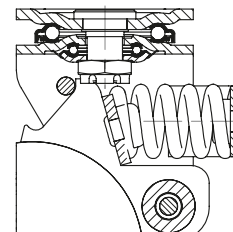
- double ball bearing in the swivel head
- bolted and secured central kingpin, extremely strong
- particularly resistant to shocks and impact due to **four specially-shaped, hardened bearing seats**

**Wheel:** ALST series

- tread: high-quality polyurethane elastomer Blickle Softhane®, hardness 75 Shore A, colour green, non-marking, non-staining
- wheel centre: die-cast aluminium, colour silver grey

**Additional details:**

- bracket series: page 94
- wheel series: page 66
- bearing types: page 84–85



Swivel castors	Fixed castors	Wheel Ø [mm]	Wheel width [mm]	Load capacity [kg]	Spring tension [kg]	Initial tension [kg]	Spring travel [mm]	Total height [mm]	Plate size [mm]	Bolt hole spacing [mm]	Bolt hole Ø [mm]	Offset swivel castor [mm]
LHF-ALST 100K-1	BHF-ALST 100K-1	100	40	320	200	30	19	175	100 x 85	80 x 60	9	32
LHF-ALST 100K-3	BHF-ALST 100K-3	100	40	320	200	30	19	175	140 x 110	105 x 75–80	11	32
LHF-ALST 125K-1	BHF-ALST 125K-1	125	40	350	240	30	21	200	100 x 85	80 x 60	9	45
LHF-ALST 125K-3	BHF-ALST 125K-3	125	40	350	240	30	21	200	140 x 110	105 x 75–80	11	45
LHF-ALST 160K	BHF-ALST 160K	160	50	580	570	50	25	245	140 x 110	105 x 75–80	11	65
LHF-ALST 200K	BHF-ALST 200K	200	50	750	570	50	25	265	140 x 110	105 x 75–80	11	65

### Versions / options



	antistatic version, non-marking grey	with "Radstop" wheel brake
Technical description page	50	113
<b>Product code suffix</b>	<b>-AS</b>	<b>-RA</b>
Available for	upon request	upon request

## LSFN-GST, BSFN-GST series

### Welded steel heavy-duty castors with steel spring, wheel with Blickle Softhane® polyurethane tread

600–1,800 kg

**Bracket:** LSFN/BSFN series

- particularly robust welded steel construction, zinc-plated, yellow-passivated, Cr6-free
- robust spring structure with steel spring
- maintenance-free spring mechanism

**Swivel bracket:**

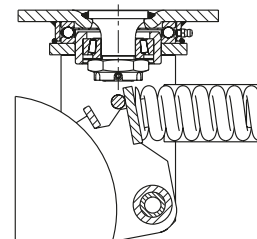
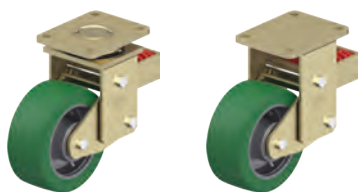
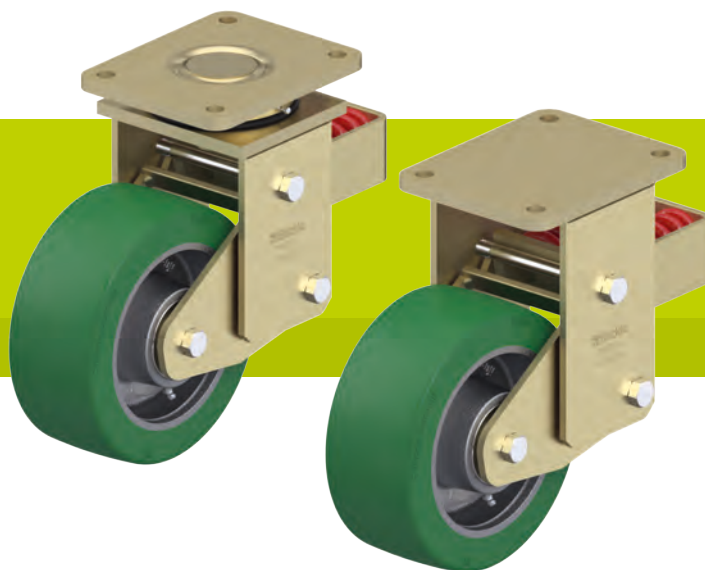
- axial grooved ball bearing ISO 104 and tapered roller bearing ISO 355 in the swivel head
- bolted and secured welded central kingpin, extremely strong
- dust and splash-proof
- grease nipple

**Wheel:** GST series

- tread: high-quality polyurethane elastomer Blickle Softhane®, hardness 75 Shore A, colour green, non-marking, non-staining
- wheel centre: rugged grey cast iron, with grease nipple, lacquered, colour silver

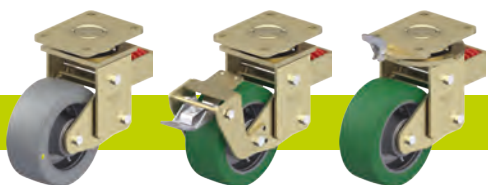
**Additional details:**

- bracket series: page 95
- wheel series: page 67
- bearing types: page 84–85



Swivel castors	Fixed castors	Wheel Ø [mm]	Wheel width [mm]	Load capacity [kg]	Spring tension [kg]	Initial tension [kg]	Spring travel [mm]	Total height [mm]	Plate size [mm]	Bolt hole spacing [mm]	Bolt hole Ø [mm]	Offset swivel castor [mm]
LSFN-GST 160K	BSFN-GST 160K	160	50	600	570	75	25	245	140 x 110	105 x 75–80	11	100
LSFN-GST 200K	BSFN-GST 200K	200	50	800	570	75	25	265	140 x 110	105 x 75–80	11	100
LSFN-GST 202K	BSFN-GST 202K	200	80	1,200	750	100	25	275	175 x 140	140 x 105	14	100
LSFN-GST 250K	BSFN-GST 250K	250	60	1,200	750	100	25	315	175 x 140	140 x 105	14	120
LSFN-GST 252K	BSFN-GST 252K	250	80	1,400	1,000	150	45	370	200 x 160	160 x 120	14	120
LSFN-GST 302K	BSFN-GST 302K	300	80	1,800	1,000	150	45	395	200 x 160	160 x 120	14	120

#### Versions / options



	antistatic version, non-marking grey	with "Radstop" wheel brake	with directional lock
Technical description page	50	113	115
<b>Product code suffix</b>	<b>-AS</b>	<b>-RA</b>	
Available for	upon request	upon request	upon request



## LSFE-GST, BSFE-GST series

### Welded steel heavy-duty castors with polyurethane spring, wheel with Blickle Softhane® polyurethane tread

600–1,400 kg

**Bracket:** LSFE/BSFE series

- particularly robust welded steel construction, zinc-plated, yellow-passivated, Cr6-free
- elastomer spring for excellent damping properties
- maintenance-free spring mechanism

**Swivel bracket:**

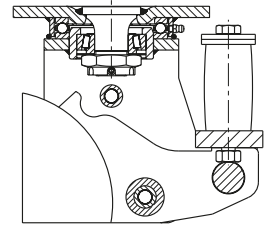
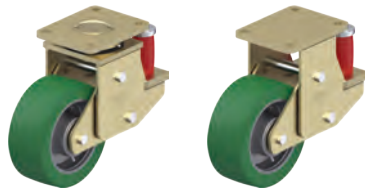
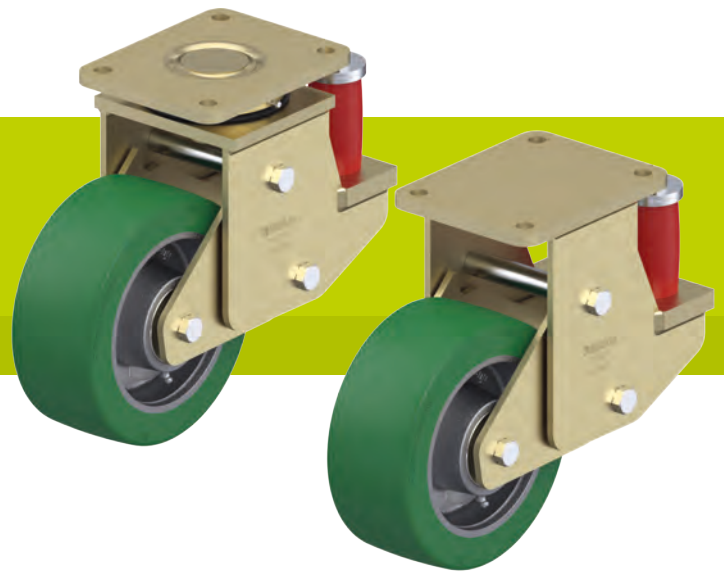
- axial grooved ball bearing ISO 104 and tapered roller bearing ISO 355 in the swivel head
- bolted and secured welded central kingpin, extremely strong
- dust and splash-proof
- grease nipple

**Wheel:** GST series

- tread: high-quality polyurethane elastomer Blickle Softhane®, hardness 75 Shore A, colour green, non-marking, non-staining
- wheel centre: rugged grey cast iron, with grease nipple, lacquered, colour silver

**Additional details:**

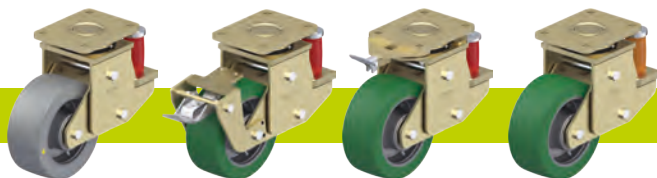
- bracket series: page 95
- wheel series: page 67
- bearing types: page 84–85



Swivel castors	Fixed castors	Wheel Ø [mm]	Wheel width [mm]	Load capacity [kg]	Spring tension [kg]	Initial tension [kg]	Spring travel [mm]	Total height [mm]	Plate size [mm]	Bolt hole spacing [mm]	Bolt hole Ø [mm]	Offset swivel castor [mm]
LSFE-GST 160K	BSFE-GST 160K	160	50	600	500	50	25	245	140 x 110	105 x 75–80	11	100
LSFE-GST 200K	BSFE-GST 200K	200	50	800	500	50	25	265	140 x 110	105 x 75–80	11	100
LSFE-GST 202K	BSFE-GST 202K	200	80	1,200	850	150	25	275	175 x 140	140 x 105	14	100
LSFE-GST 250K	BSFE-GST 250K	250	60	1,200	850	150	25	315	175 x 140	140 x 105	14	120
LSFE-GST 252K	BSFE-GST 252K	250	80	1,400	1,200	200	25	315	200 x 160	160 x 120	14	120

11

#### Versions / options



	antistatic version, non-marking grey	with "Radstop" wheel brake	with directional lock	different spring tension
Technical description page	50	113	115	
<b>Product code suffix</b>	<b>-AS</b>	<b>-RA</b>		
Available for	upon request	upon request	upon request	upon request

## LHF-ALTH, BHF-ALTH series

**Pressed steel castors, heavy-duty design, with steel spring, wheel with Blickle Extrathane® polyurethane tread**

350–800 kg

**Bracket:** LHF/BHF series

- strong pressed steel, zinc-plated, blue-passivated, Cr6-free
- heavy fork and top plate
- robust spring structure with steel spring
- maintenance-free spring mechanism

**Swivel bracket:**

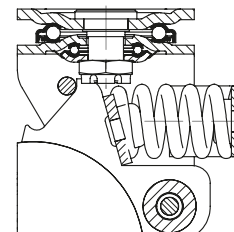
- double ball bearing in the swivel head
- bolted and secured central kingpin, extremely strong
- particularly resistant to shocks and impact due to **four specially-shaped, hardened bearing seats**

**Wheel:** ALTH series

- tread: high-quality polyurethane elastomer Blickle Extrathane®, hardness 92 Shore A, colour light brown, non-marking, non-staining
- wheel centre: die-cast aluminium, colour silver grey

**Additional details:**

- bracket series: page 94
- wheel series: page 65
- bearing types: page 84–85



Swivel castors	Fixed castors	Wheel Ø [mm]	Wheel width [mm]	Load capacity [kg]	Spring tension [kg]	Initial tension [kg]	Spring travel [mm]	Total height [mm]	Plate size [mm]	Bolt hole spacing [mm]	Bolt hole Ø [mm]	Offset swivel castor [mm]
LHF-ALTH 101K-1-FA	BHF-ALTH 101K-1-FA	100	40	350	200	30	19	175	100 x 85	80 x 60	9	32
LHF-ALTH 101K-1-FA-CO	BHF-ALTH 101K-1-FA-CO	100	40	350	200	30	19	175	100 x 85	80 x 60	9	32
LHF-ALTH 101K-3-FA	BHF-ALTH 101K-3-FA	100	40	350	200	30	19	175	140 x 110	105 x 75–80	11	32
LHF-ALTH 101K-3-FA-CO	BHF-ALTH 101K-3-FA-CO	100	40	350	200	30	19	175	140 x 110	105 x 75–80	11	32
LHF-ALTH 125K-1-FA	BHF-ALTH 125K-1-FA	125	40	350	240	30	21	200	100 x 85	80 x 60	9	45
LHF-ALTH 125K-1-FA-CO	BHF-ALTH 125K-1-FA-CO	125	40	350	240	30	21	200	100 x 85	80 x 60	9	45
LHF-ALTH 125K-3-FA	BHF-ALTH 125K-3-FA	125	40	350	240	30	21	200	140 x 110	105 x 75–80	11	45
LHF-ALTH 125K-3-FA-CO	BHF-ALTH 125K-3-FA-CO	125	40	350	240	30	21	200	140 x 110	105 x 75–80	11	45
LHF-ALTH 160K	BHF-ALTH 160K	160	50	750	570	50	25	245	140 x 110	105 x 75–80	11	65
LHF-ALTH 160K-CO	BHF-ALTH 160K-CO	160	50	750	570	50	25	245	140 x 110	105 x 75–80	11	65
LHF-ALTH 200K	BHF-ALTH 200K	200	50	800	570	50	25	265	140 x 110	105 x 75–80	11	65
LHF-ALTH 200K-CO	BHF-ALTH 200K-CO	200	50	800	570	50	25	265	140 x 110	105 x 75–80	11	65

### Versions / options



	version with extremely crowned tread	antistatic version, non-marking grey	with "Radstop" wheel brake
Technical description page	55	50	113
<b>Product code suffix</b>	<b>-CO</b>	<b>-AS</b>	<b>-RA</b>
Available for		all	upon request

## LPFE-ALTH, BPFE-ALTH series

**Heavy-duty castors with polyurethane torsion springs, wheel with Blickle Extrathane® polyurethane tread**

350–500 kg

**Bracket:** LPFE/BPFE series

- solid welded steel construction, solid forged part, zinc-plated, yellow-passivated, Cr6-free
- patented woodruff key design for outstanding spring-damping properties

**Swivel bracket:**

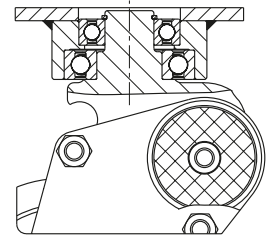
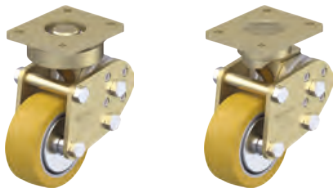
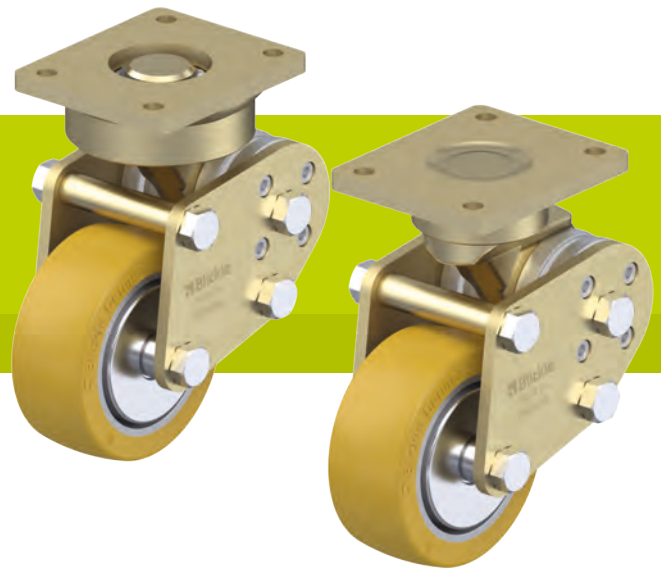
- one sealed lifetime lubricated grooved ball bearing in the swivel head (two for wheel Ø 125x50 mm or more)

**Wheel:** ALTH series

- tread: high-quality polyurethane elastomer Blickle Extrathane®, hardness 92 Shore A, colour light brown, non-marking, non-staining
- wheel centre: die-cast aluminium, colour silver grey

**Additional details:**

- bracket series: page 95
- wheel series: page 65
- bearing types: page 84–85



Swivel castors	Fixed castors	Wheel Ø [mm]	Wheel width [mm]	Load capacity [kg]	Spring tension [kg]	Initial tension [kg]	Spring travel [mm]	Total height [mm]	Plate size [mm]	Bolt hole spacing [mm]	Bolt hole Ø [mm]	Offset swivel castor [mm]
LPFE-ALTH 101K-FA	BPFE-ALTH 101K-FA	100	40	350	330	40	16	170	100 x 85	80 x 60	9	38
LPFE-ALTH 101K-FA-CO	BPFE-ALTH 101K-FA-CO	100	40	350	330	40	16	170	100 x 85	80 x 60	9	38
LPFE-ALTH 125K-FA	BPFE-ALTH 125K-FA	125	40	350	290	40	18	192	100 x 85	80 x 60	9	45
LPFE-ALTH 125K-FA-CO	BPFE-ALTH 125K-FA-CO	125	40	350	290	40	18	192	100 x 85	80 x 60	9	45
LPFE-ALTH 127K	BPFE-ALTH 127K	125	54	450	500	40	25	225	140 x 110	105 x 75–80	11	61
LPFE-ALTH 150K	BPFE-ALTH 150K	150	50	500	500	40	25	255	140 x 110	105 x 75–80	11	61

### Versions / options



	version with extremely crowned tread	antistatic version, non-marking grey	with stem
Technical description page	55	50	104
Product code suffix	-CO	-AS	-ZA
Available for		all	upon request

**LSFN-GTH, BSFN-GTH series**  
**Welded steel heavy-duty castors**  
**with steel spring, wheel with**  
**Blickle Extrathane® polyurethane tread**

800–2,400 kg

**Bracket:** LSFN/BSFN series

- particularly robust welded steel construction, zinc-plated, yellow-passivated, Cr6-free
- robust spring structure with steel spring
- maintenance-free spring mechanism

**Swivel bracket:**

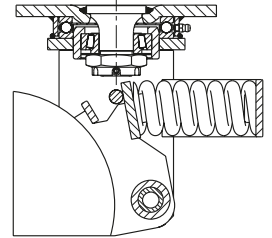
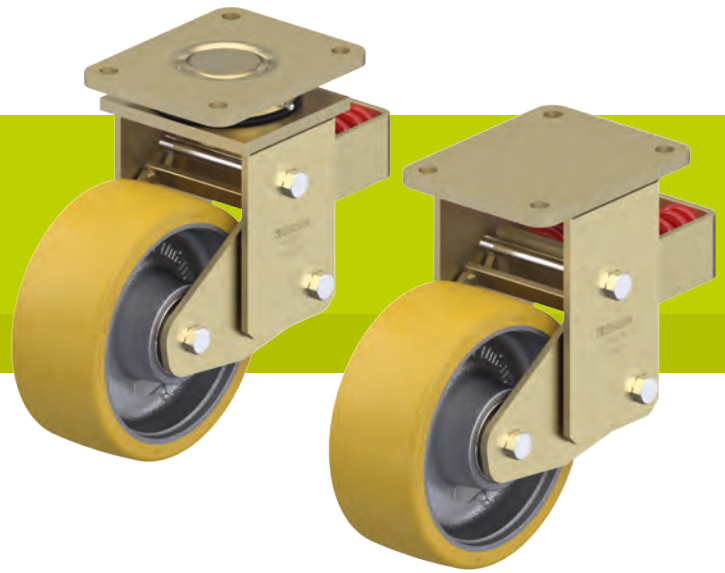
- axial grooved ball bearing ISO 104 and tapered roller bearing ISO 355 in the swivel head
- bolted and secured welded central kingpin, extremely strong
- dust and splash-proof
- grease nipple

**Wheel:** GTH series

- tread: high-quality polyurethane elastomer Blickle Extrathane®, hardness 92 Shore A, colour light brown, non-marking, non-staining
- wheel centre: rugged grey cast iron, with grease nipple, lacquered, colour silver

**Additional details:**

- bracket series: page 95
- wheel series: page 66
- bearing types: page 84–85



Swivel castors	Fixed castors	Wheel Ø [mm]	Wheel width [mm]	Load capacity [kg]	Spring tension [kg]	Initial tension [kg]	Spring travel [mm]	Total height [mm]	Plate size [mm]	Bolt hole spacing [mm]	Bolt hole Ø [mm]	Offset swivel castor [mm]
LSFN-GTH 160K	BSFN-GTH 160K	160	50	800	570	75	25	245	140 x 110	105 x 75–80	11	100
LSFN-GTH 200K	BSFN-GTH 200K	200	50	1,000	570	75	25	265	140 x 110	105 x 75–80	11	100
LSFN-GTH 202K	BSFN-GTH 202K	200	80	1,600	750	100	25	275	175 x 140	140 x 105	14	100
LSFN-GTH 250K	BSFN-GTH 250K	250	60	1,500	750	100	25	315	175 x 140	140 x 105	14	120
LSFN-GTH 252K	BSFN-GTH 252K	250	80	2,200	1,000	150	45	370	200 x 160	160 x 120	14	120
LSFN-GTH 252K-F30	BSFN-GTH 252K-F30	250	80	2,200	1,500	150	30	370	200 x 160	160 x 120	14	120
LSFN-GTH 302K	BSFN-GTH 302K	300	80	2,400	1,000	150	45	395	200 x 160	160 x 120	14	120
LSFN-GTH 302K-F30	BSFN-GTH 302K-F30	300	80	2,400	1,500	150	30	395	200 x 160	160 x 120	14	120

Version F30 with shortened spring travel

**Versions / options**



	antistatic version, non-marking grey	with "Radstop" wheel brake	with directional lock
Technical description page	50	113	115
<b>Product code suffix</b>	<b>-AS</b>	<b>-RA</b>	
Available for	upon request	upon request	upon request



## LSFE-GTH, BSFE-GTH series

**Welded steel heavy-duty castors with polyurethane spring, wheel with Blickle Extrathane® polyurethane tread**

800–1,800 kg

**Bracket:** LSFE/BSFE series

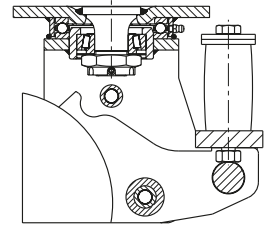
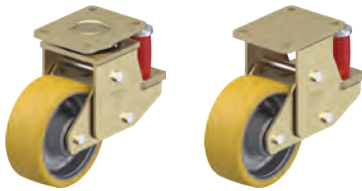
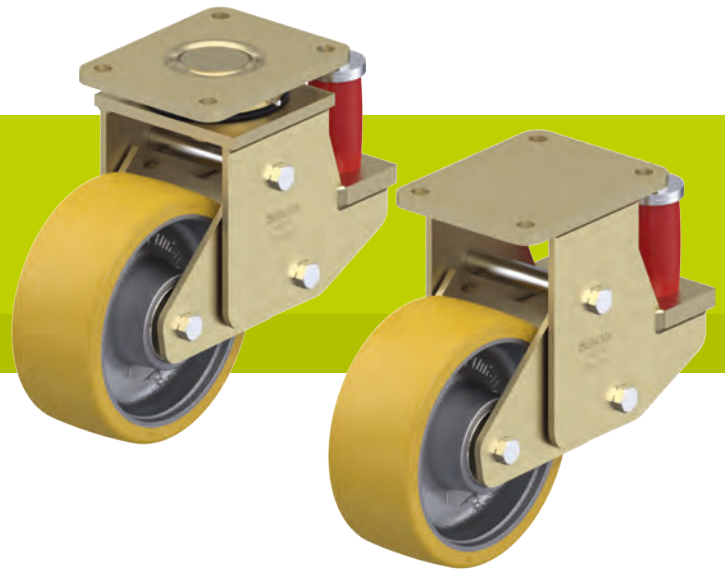
- particularly robust welded steel construction, zinc-plated, yellow-passivated, Cr6-free
- elastomer spring for excellent damping properties
- maintenance-free spring mechanism
- swivel bracket:
  - axial grooved ball bearing ISO 104 and tapered roller bearing ISO 355 in the swivel head
  - bolted and secured welded central kingpin, extremely strong
  - dust and splash-proof
  - grease nipple

**Wheel:** GTH series

- tread: high-quality polyurethane elastomer Blickle Extrathane®, hardness 92 Shore A, colour light brown, non-marking, non-staining
- wheel centre: rugged grey cast iron, with grease nipple, lacquered, colour silver

**Additional details:**

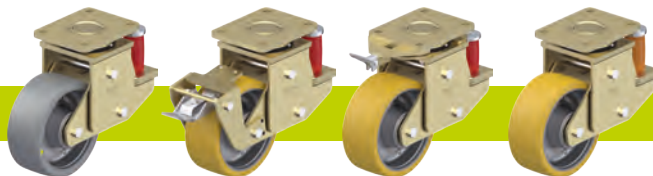
- bracket series: page 95
- wheel series: page 66
- bearing types: page 84–85



Swivel castors	Fixed castors	Wheel Ø [mm]	Wheel width [mm]	Load capacity [kg]	Spring tension [kg]	Initial tension [kg]	Spring travel [mm]	Total height [mm]	Plate size [mm]	Bolt hole spacing [mm]	Bolt hole Ø [mm]	Offset swivel castor [mm]
LSFE-GTH 160K	BSFE-GTH 160K	160	50	800	500	50	25	245	140 x 110	105 x 75–80	11	100
LSFE-GTH 200K	BSFE-GTH 200K	200	50	1,000	500	50	25	265	140 x 110	105 x 75–80	11	100
LSFE-GTH 202K	BSFE-GTH 202K	200	80	1,600	850	150	25	275	175 x 140	140 x 105	14	100
LSFE-GTH 250K	BSFE-GTH 250K	250	60	1,500	850	150	25	315	175 x 140	140 x 105	14	120
LSFE-GTH 252K	BSFE-GTH 252K	250	80	1,800	1,200	200	25	315	200 x 160	160 x 120	14	120

11

### Versions / options



	antistatic version, non-marking grey	with "Radstop" wheel brake	with directional lock	different spring tension
Technical description page	50	113	115	
<b>Product code suffix</b>	<b>-AS</b>	<b>-RA</b>		
Available for	upon request	upon request	upon request	upon request

## LSFN-GB, BSFN-GB series

### Welded steel heavy-duty castors with steel spring, wheel with Blickle Besthane® polyurethane tread

800–2,400 kg

**Bracket:** LSFN/BSFN series

- particularly robust welded steel construction, zinc-plated, yellow-passivated, Cr6-free
- robust spring structure with steel spring
- maintenance-free spring mechanism

**Swivel bracket:**

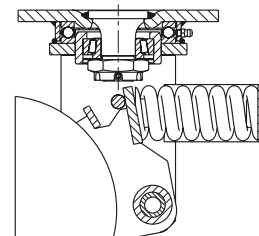
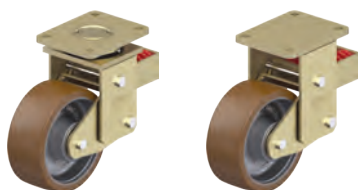
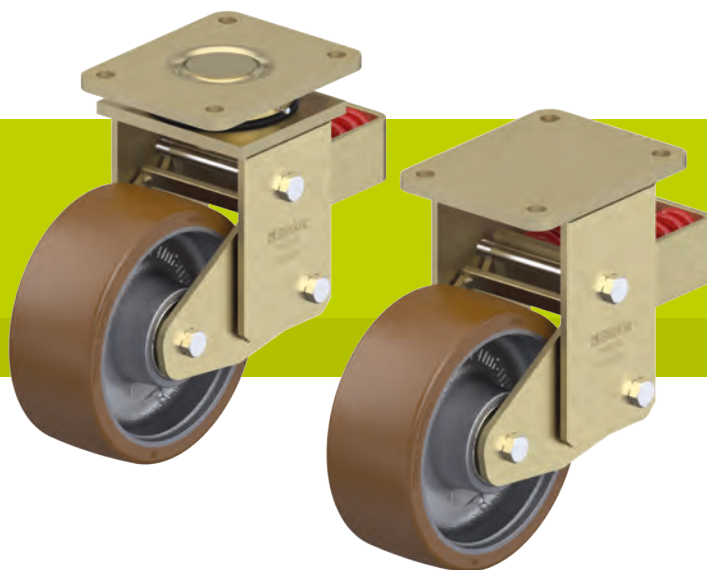
- axial grooved ball bearing ISO 104 and tapered roller bearing ISO 355 in the swivel head
- bolted and secured welded central kingpin, extremely strong
- dust and splash-proof
- grease nipple

**Wheel:** GB series

- tread: high-quality polyurethane elastomer Blickle Besthane®, hardness 92 Shore A, colour brown, non-marking, non-staining
- wheel centre: rugged grey cast iron, with grease nipple, lacquered, colour silver

**Additional details:**

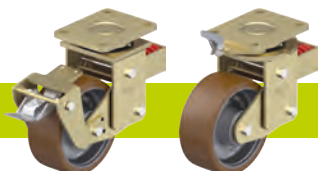
- bracket series: page 95
- wheel series: page 67
- bearing types: page 84–85



Swivel castors	Fixed castors	Wheel Ø [mm]	Wheel width [mm]	Load capacity [kg]	Spring tension [kg]	Initial tension [kg]	Spring travel [mm]	Total height [mm]	Plate size [mm]	Bolt hole spacing [mm]	Bolt hole Ø [mm]	Offset swivel castor [mm]
LSFN-GB 160K	BSFN-GB 160K	160	50	800	570	75	25	245	140 x 110	105 x 75–80	11	100
LSFN-GB 200K	BSFN-GB 200K	200	50	1,000	570	75	25	265	140 x 110	105 x 75–80	11	100
LSFN-GB 202K	BSFN-GB 202K	200	80	1,600	750	100	25	275	175 x 140	140 x 105	14	100
LSFN-GB 250K	BSFN-GB 250K	250	60	1,500	750	100	25	315	175 x 140	140 x 105	14	120
LSFN-GB 252K	BSFN-GB 252K	250	80	2,200	1,000	150	45	370	200 x 160	160 x 120	14	120
LSFN-GB 252K-F30	BSFN-GB 252K-F30	250	80	2,200	1,500	150	30	370	200 x 160	160 x 120	14	120
LSFN-GB 302K	BSFN-GB 302K	300	80	2,400	1,000	150	45	395	200 x 160	160 x 120	14	120
LSFN-GB 302K-F30	BSFN-GB 302K-F30	300	80	2,400	1,500	150	30	395	200 x 160	160 x 120	14	120

Version F30 with shortened spring travel

#### Versions / options



	with "Radstop" wheel brake	with directional lock
Technical description page	113	115
<b>Product code suffix</b>	<b>-RA</b>	
Available for	upon request	upon request

## LSFE-GB, BSFE-GB series

### Welded steel heavy-duty castors with polyurethane spring, wheel with Blickle Besthane® polyurethane tread

800–1,800 kg

**Bracket:** LSFE/BSFE series

- particularly robust welded steel construction, zinc-plated, yellow-passivated, Cr6-free
- elastomer spring for excellent damping properties
- maintenance-free spring mechanism

**Swivel bracket:**

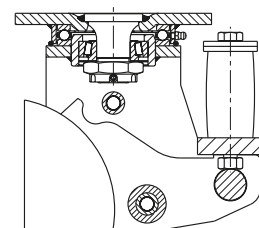
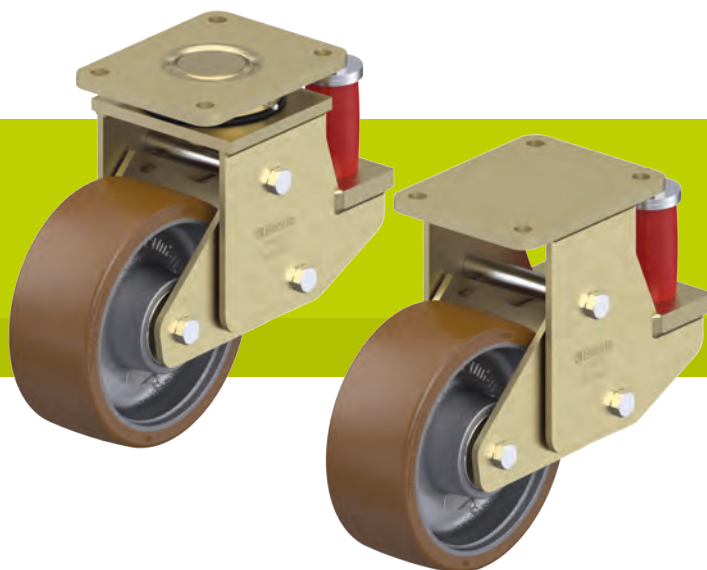
- axial grooved ball bearing ISO 104 and tapered roller bearing ISO 355 in the swivel head
- bolted and secured welded central kingpin, extremely strong
- dust and splash-proof
- grease nipple

**Wheel:** GB series

- tread: high-quality polyurethane elastomer Blickle Besthane®, hardness 92 Shore A, colour brown, non-marking, non-staining
- wheel centre: rugged grey cast iron, with grease nipple, lacquered, colour silver

**Additional details:**

- bracket series: page 95
- wheel series: page 67
- bearing types: page 84–85



Swivel castors	Fixed castors	Wheel Ø [mm]	Wheel width [mm]	Load capacity [kg]	Spring tension [kg]	Initial tension [kg]	Spring travel [mm]	Total height [mm]	Plate size [mm]	Bolt hole spacing [mm]	Bolt hole Ø [mm]	Offset swivel castor [mm]
LSFE-GB 160K	BSFE-GB 160K	160	50	800	500	50	25	245	140 x 110	105 x 75–80	11	100
LSFE-GB 200K	BSFE-GB 200K	200	50	1,000	500	50	25	265	140 x 110	105 x 75–80	11	100
LSFE-GB 202K	BSFE-GB 202K	200	80	1,600	850	150	25	275	175 x 140	140 x 105	14	100
LSFE-GB 250K	BSFE-GB 250K	250	60	1,500	850	150	25	315	175 x 140	140 x 105	14	120
LSFE-GB 252K	BSFE-GB 252K	250	80	1,800	1,200	200	25	315	200 x 160	160 x 120	14	120

#### Versions / options



	with "Radstop" wheel brake	with directional lock	different spring tension
Technical description page	113	115	
<b>Product code suffix</b>	<b>-RA</b>		
Available for	upon request	upon request	upon request